

NEARSHORE MARINE GROUND INVESTIGATIONS

SUMMARY

Lankelma undertakes the majority of international nearshore marine ground investigation projects from its Combifloat jack-up barge the “Sandpiper”.



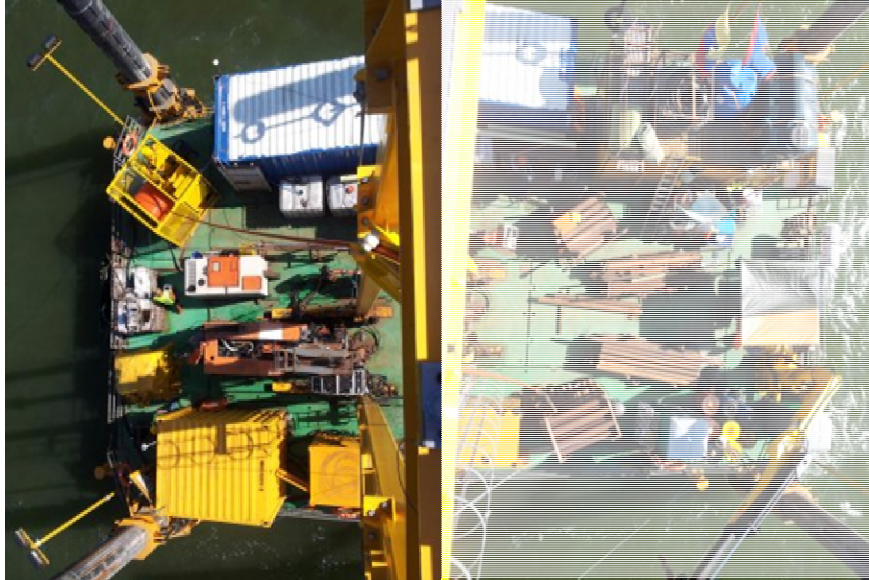
Sandpiper on Lake Maracaibo - 2014

PLATFORM SPECIFICATION (SANDPIPER)

- Dimensions: 18.3 x 12.2m
- Hull Depth: 1.52m
- Leg Length: 27.3m (22.2m from underside of deck - can be extended)
- Leg diameter: 760mm
- Max. Deck load : 80 ton
- Operational displacement: 215.3T
- Deck point load : 15T/ m²
- GL Class notation : +100A5 K(20) Self-Elevating Unit
- Propulsion: None currently, but can be fitted with thruster
- Transport in modular form: Break bulk seafreight or road transport (c. 10 lorries).

SPECIFICATIONS

Operated on a 24/7 basis by a core shift team of 5 staff per shift, the jack-up is fitted with the following standardised deck spread to undertake an efficient unified approach to drilling and CPT investigation in up to 15m water depth:



- Hydraulic deck-mounted crane
- Hydraulic jacking unit power pack
- 15m high independent mast for rapid deployment of downhole CPT or drill string
- 8T rotary drilling unit running a Geobor S drilling system
- Cable Percussion Rig
- Downhole CPT (Wilson APB)
- Top push CPT rams complete with self-contained power pack
- Whisperwatt 3-phase 25kVa Generator
- Navigation system and VHF radio
- Air conditioned 20' container housing welfare and stores/workshop area

Notwithstanding the above, the platform can be configured to suit individual project needs taking into account deck space required, geological and marine environments and the purpose of investigation.

BESPOKE SOLUTIONS

In order to provide best-fit project solutions, Lankelma have also routinely worked from vessels of opportunity around the World: fixed platforms, lift boats and spud-legged barges.

Pictured : Drilling rig cantilevered from a platform gathering samples and data for on-the-spot LPA calculations.

